

# THE MERIDIAN SWAVESEY



No. 220 June/July 2026

## EDITORIAL

Firstly, we would like to extend our sincere thanks to the remaining active team members whose dedication and hard work have ensured that this latest issue has made it to print. We are equally grateful to all past members who have supported the magazine over the years, your contributions have built the strong foundation we continue to rely on today.

With the help and encouragement of the current Meridian volunteers, we are delighted to be able to continue producing this valued community magazine.

We're excited about the future and look forward to building on what's already been achieved. Over time, we'll be making some updates to both the magazine and the website, while continuing to provide the printed edition that so many of you enjoy and rely on.

Kind regards  
Sam & Siobhan Barnes  
Editors – Swavesey Meridian Magazine

IN THIS ISSUE ...	
Front Cover - By Peter Morris	page 1
Editorial	page 2
Meridian Committee	page 3
Major Events List	page 4
Dates for your diary and forthcoming events	page 5
Club Reports	page 6-11
Miscellany	page 13-20
Medical News	page 22-25
School Information	page 26-28
Parish and County news	page 29-33
Churches	page 34-39
Community Groups & Charities table	page 40
Club Information	page 41-43
Advertiser	Page 44-57
Advert Costs, Major Events & Birthday forms	Page 57-58
Useful Telephone Numbers	page 59
White Horse Poster	page 60

## MERIDIAN COMMITTEE

Editor	Sam & Siobhan Barnes	admin@swaveseymeridian.org.uk
Deputy Editor	Alan Morris	editor@swaveseymeridian.org.uk
Treasurer	Sam & Siobhan Barnes	admin@swaveseymeridian.org.uk
Production	Alan Morris	editor@swaveseymeridian.org.uk
Advertising:	Sam & Siobhan Barnes	admin@swaveseymeridian.org.uk
Distribution	Neil Jordison	distribution@swaveseymeridian.org.uk
Proofreading	Alison Lucas	
Website:	Sam & Siobhan Barnes	admin@swaveseymeridian.org.uk
Admin	Sam & Siobhan Barnes	admin@swaveseymeridian.org.uk
Complaints		complaints@swaveseymeridian.org.uk

### Disclaimer

The editors and publishers of this magazine make every effort to ensure that the information contained within is accurate at the time of publication. However, we accept no responsibility or liability for any errors, omissions, or inaccuracies in the content.

The views expressed in articles, advertisements, or other contributions are those of the respective authors or advertisers and do not necessarily reflect the views of the editors or publishers.

To the fullest extent permitted by law, the editors and publishers disclaim all liability for any loss, damage, or inconvenience arising as a result of reliance on information published in this magazine.

## Major Events List

This list is intended to avoid major events clashing on the same day. It will only work if we are advised of all such events, so please let us know as soon as you can confirm the details.

A form is available at the back of this magazine. We will list them in this section of the Magazine and also on our website at:- [www.swaveseymeridian.org.uk](http://www.swaveseymeridian.org.uk)

Saturday 13 June	Sustainability	Sustainability Event - 10-2.30pm - Memorial Hall
Sunday 21 June	Spartans Football	Spartans Day
Saturday 27 June	St Andrews	2:00 – 4:00pm: Teddy Bear Zip Wire
Saturday 27 June	Community Orchard	Swavesey Community Orchard BioBlitz
Saturday 27 June	Bethel Baptist	Comberton Gospel Choir - 7.00pm at Bethel Baptist Church
Friday 10 July	The Pantaloons Outdoor Theatre	Sherlock Homes and the Hound of the Baskervilles 7pm at Market st Green - Contact Simon Shore Mob. 07711 485114 Email simonshore99@gmail.com
Friday 17 July	Stuart Faben - 07887 906982	Beer & Bubbles - 2.30pm at Swavesey Pavilion – The Green
Saturday 18 July	Stuart Faben - 07887 906982	Beer & Bubbles - 2.30pm at Swavesey Pavilion – The Green
Saturday 3 October	St Andrews	Crafternoon
Saturday 12 December	Bethel Baptist	Market Street Carols



## DATES FOR YOUR DIARY



June		
Friday 5	Refuse Collection	Green & Blue Bins
Friday 12	Refuse Collection	Black Bin Collection
Saturday 13	Sustainability	Sustainability Event - 10-2.30pm - Memorial Hall
Friday 19	Refuse Collection	Green & Blue Bins
Sunday 21	Spartans Football	Spartans Day
Monday 22	Parish Council	Full Council Meeting
Friday 26	Refuse Collection	Black Bin Collection
Saturday 27	St Andrews	2:00 – 4:00pm: Teddy Bear Zip Wire
Saturday 27	Community Orchard	Swavesey Community Orchard BioBlitz
Saturday 27	Bethel Baptist	Comberton Gospel Choir - 7.00pm at Bethel Baptist Church
July		
Friday 3	Refuse Collection	Green & Blue Bins
Friday 10	The Pantaloons Outdoor Theatre	Sherlock Homes and the Hound of the Baskervilles 7pm at Market st Green - Contact Simon Shore Mob. 07711 485114 Email simonshore99@gmail.com
Friday 10	Refuse Collection	Black Bin Collection
Friday 17	Stuart Faben - 07887 906982	Beer & Bubbles - 2.30pm at Swavesey Pavilion – The Green
Friday 17	Refuse Collection	Green & Blue Bins
Saturday 18	Stuart Faben - 07887 906982	Beer & Bubbles - 2.30pm at Swavesey Pavilion – The Green
Friday 24	Refuse Collection	Black Bin Collection
Monday 27	Parish Council	Full Council Meeting
Friday 31	Refuse Collection	Green & Blue Bins

# CLUB REPORTS

## Swavesey & District History Society

**March meeting.** About forty people, including a number of new members, attended to hear Peter Tatam from Halesworth speak on “The Old Vicarage at Grantchester”. There is evidence of settlement in Grantchester from the Saxon, Roman, Iron Age, Bronze Age and earlier periods. In the Domesday book of 1086, it is named Grantsete. In the 1800s much of the local land was mined for coprolites, fossilised dinosaur poo, which on treatment with sulphuric acid produces a valuable phosphate fertiliser. Although today’s population is small, at about 550, it has four public houses. The Cambridge Distillery is located in High Street with a shop offering bespoke gin experiences. Recently a bottle of gin in the window was priced at £220. Because of the work of academics at Cambridge, Grantchester is home to the highest concentration of Nobel prizes per person than anywhere else in the world!

The Old Vicarage was built in 1683 and is surrounded by large gardens and the nearby tearoom. Nowadays it also features numerous sculptures. It passed from church ownership into private hands in 1820, and was bought in 1850 by Samuel Widnall who extended it and established a printing business, the Widnall Press.

Famous for its association with the poet Rupert Brooke, who went to Rugby School, and particularly for being the subject of his nostalgic 1912 poem about the old vicarage. Written while he was in Berlin and longing for the English countryside, it highlights the peace of Grantchester village. The lines include: - At Over they fling oaths at one. And worse than oaths at Trumpington. And Ditton girls are mean and dirty. And there’s none in Harston under thirty. It ends: - oh, yet stands the Church clock at ten to three? And is there honey still for tea? Winston Churchill was a big fan of his poetry. There is a statue of Brooke in today’s garden. Orchard House was rented by Brooke before moving to The Old Vicarage and the nearby orchard tea garden. The Bloomsbury Group was an influential early 20th-century collective of British writers, artists, and intellectuals including Virginia Woolf, John Maynard Keynes, and E.M. Forster and they often met on the premises.

Author and former politician Jeffrey Archer and his wife, Dame Mary Archer, have owned and lived at The Old Vicarage since 1979. He overcame bankruptcy in the 1970s by turning to writing. He now has an estimated personal fortune of around £210 million with his wealth primarily driven by sales of over 300 million copies of his novels worldwide. Mary Archer was made a Dame Commander of the Order of the British Empire (DBE, higher than an OBE) in June 2012. She was awarded the higher honour of Damehood for her extensive services to the NHS.

**April meeting.** Again, forty people attended to hear Roger Crabtree and Bob Bates tell the story of PYE in Cambridge, 1896 – 2026. Both worked there for many years from the 1950s/60s but in 2010 it became clear that the vast knowledge of the company would soon be lost. So, they interviewed over 60 former employees and in 2019 helped to set up a major PYE exhibition at the Cambridge Museum of Technology, with its entrance on Riverside into The Old Pumping Station in Cheddars Lane.

W G Pye and Company Limited was founded in Cambridge in 1896 by William George Pye who started making scientific instruments in his garden shed. For a few years he was employed at Cavendish Laboratories. In 1922 his PYE company began a subsidiary producing radios which was sold in 1929 to C O Stanley, becoming Pye Radio Ltd (later Pye Ltd). Between 1936, when 40 people were employed, and 1947 the company successfully concentrated on design and manufacture of military equipment including gunsights, aircraft height finders and radar – they also had their own Home Guard troop. C O was both an excellent salesman and a brilliant motivator, and enthusiastically inspired clever technical people to excel. He was a hard worker, a very good speaker and a charismatic leader. In 1922 the first PYE wireless was produced and more manufacturing buildings were built in Cambridge. They started producing record players and vinyl records in the 1950s with artists including Lonnie Donegan, Petula Clark, the Searchers, the Kinks, Sandie Shaw, Status Quo and Brotherhood of Man. In the early 1960s PYE was at its peak with 28,000 employees and a vast range of products. Roger joined PYE Telecom in 1969, producing mobile, one-way, radios for police, fire and taxi companies. Daily PYE buses brought in hundreds of workers from surrounding villages including Over and Swavesey.

In 1947, W G Pye & Co was sold to Pye Ltd. By 1962 there were already signs of looming problems such as deteriorating quality of PYE televisions. In 1966 management ousted C O Stanley and in 1976 there was a fierce takeover battle between Philips and Thorn, which Philips won. In 1996, Philips telecom was sold to Cineven and its name changed to Simoco International. In 2002, various sell-offs meant that Simoco was placed into administration. In late 2002, the radio communications business was purchased by Team Telecom and became known as Team Simoco. In 2010, Team Telecom Group was formed and is now made up of 3 companies, including Simoco Group. The situation has not improved since and by today many of the Cambridge sites are under housing estates.

This was a very detailed presentation from two excellent, senior speakers and which can be followed up at the Cambridge Museum of Technology.

**Next meeting** – 16 June. Houghton Watermill on the Great Ouse. Selwyn Richardson.

**Selwyn**



## Swavesey Spartans Football Club

With print deadlines requiring an almost 2 month submission lead in, it's sometimes difficult to accurately reflect in real time how our respective teams are doing.

So let's start by saying well done to all our teams for winning their respective leagues!!!!

Well, you never know and it's good to dream!!!!

All fixtures will be completed by the time you are reading this and regardless of league position, the club is always so proud of all the players and coaches for their collective hard work throughout the season.

Our minds will now be turning to our annual celebration of football – Spartans Day.

Spartans Day is a very important day in our calendar as it not only enables us to celebrate the efforts of all our players and coaches, including the coveted long service tankards for those players completing 10 years with the club, it's also our biggest fundraiser of the year.

Grassroot clubs like ours really do live hand to mouth, so any opportunity to raise money is so important to enable us to continue providing the young people of Swavesey and surrounding villages a safe and rewarding footballing opportunity.

We again send out our plea to local businesses to consider supporting us via sponsorship. Opportunities exist for whole club sponsorship, individual team or even just a few footballs. As the saying goes – Every little helps. (Other supermarket slogans are available!)

As always, the event will be held on Fathers day, this year being Sunday 21<sup>st</sup> June.

The football kicks off at 10:00, so please drop by and take some time to enjoy the exhibition matches, whilst at the same time sampling the fine food on offer. Who doesn't enjoy a burger, tea and cake or the opportunity to win a magnificent raffle prize on a fine summer's day?!?

We're very pleased to see the introduction of a new team into the Spartans family. We hadn't previously had an Under 7s team (U8s next

season), so we're very grateful to the parents of that age group to volunteer to take the team on. Early training sessions have been very well attended and it's great to be able to offer boys and girls of that age the opportunity to play football.

In other positive news, the U5/6 team have been training most Saturdays over the last 6 months and are developing very well. We are seeking more players at this age group, so please contact us via our website for more details.

Next season as an Under 7 team, they will be eligible to play matches under the new FA initiative for young players called Future Fit. This exciting development sees the introduction of a new 3v3 format that provides more in game ball time for all participants, providing a fun, inclusive and stress free environment for players of all abilities.

We look forward to seeing you at the village green on June 21<sup>st</sup>. Bring some cash!!!

**One Club. All Voices. United Through Football.**

SUMMIT

# LANDSCAPES

PAVING - DRIVEWAYS - BRICKWORK  
CARPENTRY - GROUNDWORKS

[www.landscapingpaving.co.uk](http://www.landscapingpaving.co.uk)  
PHONE: 01223-929394

**PEST PROBLEM?** Family firm since 1974

LOCAL QUALITY SERVICE

pest control/prevention/  
emergencies/contracts/quotations/  
birds/rodents/insects/more...

t: 01954 230708  
m: 07789 502556  
w: www.drepestcontrol.co.uk  
e: info@drepestcontrol.co.uk

**DRE** Pest Control Limited 19, WALLMANS LANE  
CAMBRIDGE  
CB24 4QY



**CHIMNEY SWEEP**

**J. L. Wight**

City & Guilds Qualified

Advice given /  
Problems solved 

Certificates issued

Fully Insured 

HETAS registered

**01954 253315**  
www.camsweep.co.uk  
26 Cow Lane, Rampton



## Swavesey WI News

There is always a warm welcome at our WI meetings and if you are new to the village and would like to make new friends, come along and meet us!

Our meetings are on the second Monday of the month in the Memorial Hall at 7.30pm.

For further information please ring the following:- Glesny Sheppard 01954 201731/Deirdre Burgess 01954 230897.

You can also find us hosting the Compass Cafe on the fourth Thursday of the month in the Bethel Church, with coffee, homemade cakes and lots of chat!

We are a lively and thriving WI with a full programme for the year. We also have other interest groups such as Walking/Eating Out and Book Group.

At our April meeting, our speaker was Sue Blyde and her friend Alison who gave a very informative talk with slides on their recent fundraising trip to the Arctic for the National Literacy Trust Arctic Challenge.

Meetings Coming Up	
July 13th	"You couldn't make it up—laughing at life and ourselves" - Talk by Sarah Harrison
August 10th	Talk by Dr. Larry Amure.
September 14th	The Sandringham Royal Station - Talk by Ellee Seymour.

**Selwyn's Cambridgeshire Villages Quiz. Part 1.**

e.g. Question: "This thread lost a "T". Answer: "Coton"

Lads in conflict	Stepping out. Precision timing
What price this little lad's velvet coat	Inter
US president lost his capital	Not in Kent! Wrong spelling
Dollar's worth of hideout	Musical Duke
Created Animal Farm	Blue veined

You will find the answers to this puzzle on page 19




**HEMINGFORD**  
ARB

PROFESSIONAL TREE SURGEON

- ⌘ Felling/sectional felling
- ⌘ Crown reduction/thinning
- ⌘ Pollarding
- ⌘ Shaping
- ⌘ Hedge trimming
- ⌘ Stump grinding
- ⌘ Firewood for sale
- ⌘ Free quotation

All aspects of garden and tree work covered.  
NPTC Qualified. Fully insured.

Tel: 01480 463674  
Mob: 07876 521605  
Email: hemingfordarb2016@gmail.com




# MISCELLANY

## Swavesey Library has a new home!



Do come and visit our lovely new library. Follow the signs at the front of Swavesey Village College by the mini roundabout.

Opening times are:  
Tuesday afternoons 3.30pm - 5.30pm, Wednesday evenings 5pm – 7pm and Saturday mornings 10 – 12 noon.

Want to meet people in our village?

Join our happy team: come along to the library to find out more....one session per person is all that is needed!

Or contact [catchester.55@virginmedia.com](mailto:catchester.55@virginmedia.com)

Hundreds of childrens' (picture books – young adults) books to borrow.

Order and return books from any Cambridgeshire Library.

Not a member? It's easy to join online or at the library. Swavesey Library is run by volunteers. Could you spare a couple of hours a month to join the team?

We look forward to welcoming you and your family

For further information – [www.swavesey-pc.gov.uk/community/swavesey-your-library/](http://www.swavesey-pc.gov.uk/community/swavesey-your-library/) Swavesey Village Life on Facebook or contact: Catherine 01954 232536 - evenings or Lorraine 01954 232478

## Paying too much for your glasses?

### Save Money - Buy Direct!

Visit our factory shop to see our fabulous range of Discount Prescription Eyewear

- Hundreds of frames to choose from, including designer frames from Ray-Ban, Polo Ralph Lauren, Oakley, PRADA, Ted Baker and Versace
- Specialists in high and complex prescriptions
- Same-day or next-day service available\*
- Save up to 75%
- Huge range of designer sunglasses
- Full range of sports eyewear

Official stockists \*subject to prescription and availability

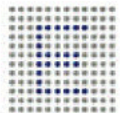


**We are open 9am to 5pm Monday to Friday, and 9am to 1pm Saturday**



**ALL EYES**  
SPECTACLE MAKERS  
SINCE 1987

Call us **01954 231545** Visit our website **www.all-eyes.co.uk**  
20 Norman Way Industrial Park, Over, Cambridge CB24 5QE



**ENTIRE**  
GROUP



30007



The Complete Gas Heating and Plumbing Company

**Plumbing • Heating • Gas  
Bathrooms • Water Softeners  
Property Maintenance**

**Tel: 01954 204044 • Web: [www.entiregroup.co.uk](http://www.entiregroup.co.uk)  
Email: [service@entiregroup.co.uk](mailto:service@entiregroup.co.uk)**



**We turn  
complex tech  
into measurable  
benefits.**

We work with corporates, startups and SMEs to cut through the technology that slows them down. By combining AI-assisted development with our platform approach, we make every application faster, cheaper and simpler to run.

[pivotsystems.co.uk](http://pivotsystems.co.uk)

## ALAN'S CARPETS

**Carpets and Vinyl  
Supplied and Fitted**

We have been in the carpet trade  
for over 47 Years!

Samples To Your Home

Measure

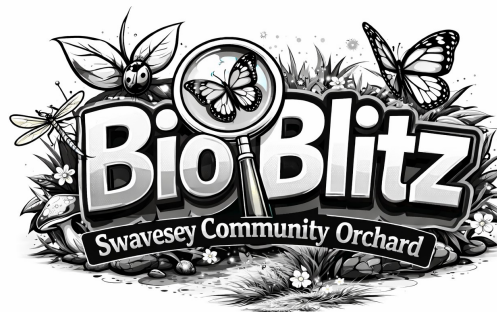
Quote

Express delivery & fitting included

Phone 07790 681317

or

07790 544250



**Saturday 27<sup>th</sup> June 2026 10-4pm**

**A free fun and informative experience for budding ecologists young and old**

A BioBlitz can be a great hands-on way to interact with nature. You don't need to be an expert. We will provide guides and you can use the iNaturalist app on your smartphone to photograph and identify the species you find. Experts will also be on hand to help. The iNaturalist data will be collated to create a biodiversity map of the orchard.

Activities and habitats will include:

Early morning dawn chorus

Pond dipping

Moth overnight traps

Hedgerows

Orchard fruit trees

Grasses and flowers

Evening bat and bird walk

Carpet refugia (carpet squares)

We will have pond dipping nets, butterfly nets, bat detector, moth traps, binoculars, hand lenses, microscope(s), wild life cameras and aspirators for use or for demonstration on the day. If you can offer any equipment please get in touch.

The free Merlin app can be used on a smartphone to record and identify song birds

For more information on how you can be part of this event please contact Glyn Jones [gj@2gsc.net](mailto:gj@2gsc.net) 07977 907622

A BioBlitz is an event in which volunteers work together in small groups to find and identify as many species of plants, animals, birds, fungi, and other organisms as possible.

Come for an hour or stay all day—bring along a picnic

Visit our truly stunning display gardens ...



**Probably the largest display centre in the UK, selling directly to trade and the general public**

Bannold are one of the UK's largest independent suppliers of natural hard landscaping materials. We stock natural products sourced directly from the UK and around the world enabling Bannold to offer premium products at the most competitive rates to trade and the general public.

- Natural Paving • Setts and Paviours • Stone Walling
- Decorative Gravels • Rockery • Boulders • Waterfeatures
- Topsoils • Soil Improvers • Bark Mulches • Sands
- Hardcore and Cements



Freephone: 0500 012231  
or 01954 231666

Capability Barns  
Huntingdon Road  
Fen Drayton  
Cambridge CB24 4SD

Opening Times:  
Mon-Fri 07.30 till 5.00  
Saturdays 09.00 till 1.00

[www.bannold.co.uk](http://www.bannold.co.uk)



## Sustainability Event - 10-2.30pm June 13 at Swavesey Memorial Hall

There is going to be a ton of free, sustainable fun:

- \* Activities for kids organised by Sheddit - build a bug collecting device, examine soil under a microscope, see our marvellous insect hotel and build your own to take home.
- \* A Repair Cafe.
- \* A Swish. (Swap your preloved, clean and in-good-condition clothes).
- \* The community orchard will be advertising their free event the following weekend.
- \* The library will be selling retired but still good to read books at a very nominal cost!
- \* A story telling corner for the little people.
- \* Tea, coffee, cake and good conversation!

Please look out for more information in the Swavesey Facebook group and email [lisa.veit@gmail.com](mailto:lisa.veit@gmail.com) to book for the repair cafe.

**HOCKEYS**  
ESTABLISHED 1885



**Thinking of a move?** We are happy to offer you a free, no obligation valuation of your property.



Call our Cambridge office for a free valuation  
**(01223) 356054**



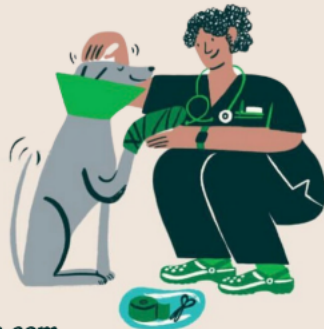
Call our Willingham office for a free valuation  
**(01954) 260940**

Room for plenty more paws!

Vets  
for  
Pets  
Bar Hill

Your locally  
owned  
vets on  
Viking Way,  
Bar Hill

Celebrating  
almost one  
year on the  
block!



Find out more about us



Shh...If you quote  
"Swavesey meridian" you  
could get £30 off our  
Complete Care plans

Phone: 01223 243535  
whatsapp: 07360 493 944  
Email: barhill@vetsforpets.com

Answers to Selwyn's Cambridgeshire Villages Quiz. Part 1.  
on page 10

Lads in conflict	Warboys
What price this little lad's velvet coat	Molesworth
US president lost his capital	Linton
Dollar's worth of hideout	Buckden
Created Animal Farm	Orwell
Stepping out. Precision timing	March
Inter	Bury
Not in Kent! Wrong spelling	Earith
Musical Duke	Ellington
Blue veined	Stilton

Quality Bespoke Secure Storage

Space for all your storage needs

Easy to open & fast to access. High security with PIN codes, HD CCTV cameras & individual room alarms. Choose as little or as much space as you really need, for any length of stay, with no long term commitment. Clean, dry, ventilated & condensation free. Friendly & helpful service with packaging available. Open to customers everyday from 7am to 9pm. Viewings arranged by appointment.



Located at Manor Farm, Graveley, PE19 6PH. Mention SMM22 to receive £5 discount on your first month of storage room rental.

• Home • Document • Commercial



[www.morespacestorage.co.uk](http://www.morespacestorage.co.uk)

Call 01480 830130

# Compass Café

"Encompasses the community"

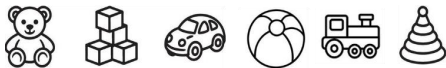
All are welcome on Thursdays  
10:30am until 12 noon  
At Bethel Baptist Church



Our cakes are home-made,  
our coffee and sugar are Fairtrade,  
our tea bags are plastic-free.



Priced to be affordable:  
Tea/coffee/hot chocolate £1 per mug  
and Cakes £1.50 per large slice  
Squash is free



The front and far side doors have a ramp for  
wheelchair users and pushchairs, and there is  
a carpet and toys for pre-school age customers.



Compass Café is run as a community event, a place to meet  
and chat. Your hosts are a group from one of:  
Bethel Baptist Church, Girlguiding Units in Swavesey,  
Swavesey Primary School PTA, St Andrew's Church  
and Swavesey Women's Institute.

**When there is a 5th Thursday in the month other groups  
are invited to run the café to fundraise. Please get in  
touch with Sue Ellington if you would like to know more.  
sue.ellington@virgin.net or phone 07774 146331**

**Future 5th Thursday dates available in 2026: 30th Jul, 29th Oct**



Together we are **Design Monkey**

Building strong relationships to drive digital  
success - through bespoke **websites**, **SEO**, and  
**digital marketing** tailored to your business.

Your Project?  
**Let's talk.**

**01223 398 156**  
hello@design-monkey.co.uk

## JASON KIRBY LTD

EXPERT DECORATORS

All Aspects of Internal & External Decorating  
Period, Residential & Commercial Properties  
Wallpaper & Mural Install  
Kitchen Cabinet & Furniture Re-Sprays  
Floor Sanding & Restoration  
Plastering, Coving & Artex  
City & Guilds, NVQ Qualified  
For Service, Quality & Reliability



☎ 01954 211775  
🌐 jasonkirbyltd.co.uk

## R. A. Miller

Plumbing and Domestic Heating

Fenside, 71 Willingham Road, Over  
Cambridge CB24 5PE

Tel: 01954 203277 Mob: 07831 853885  
Email: robert.miller@ntlworld.com

All plumbing work undertaken

- » New boiler replacement and installation with  
free quotation.
- » GAS boiler and GAS fire servicing  
Landlord Certificates.
- » Heating problems - Diagnosis  
and rectification.
- » General plumbing - taps, washers,  
pipework, showers, etc.
- » Full and partial Bathroom installation work.

For a reliable and professional service

Robert Miller MCIPHE RP



Office 01954 203 277  
Mobile 07831 853 885





## OWLS Community Car Scheme needs your help

OWLS has a wonderful group of drivers who voluntarily give their time to take eligible people to medical appointments, trips to the hairdresser, bank, solicitor, local shopping etc. OWLS volunteers tend to be very busy people, often with limited availability but we are grateful for any time they can give. We urgently need more drivers as demand increases. Unfortunately, some requests are now having to be turned down through lack of drivers.

Could you help to keep this much needed and valued local Community Scheme going? Are you newly retired and wanting to do something to help elderly people stay independent? Drivers do not have to commit to certain days/times and can always refuse journeys so it can fit around part time work or other commitments. Drivers receive 45p a mile and will need a DBS check (free).

OWLS are also looking for an additional volunteer co-ordinator to answer calls and messages and arrange journeys. Coordinators work on a rota system, having the scheme mobile phone for a fortnight about five times a year.

For more information about becoming a volunteer coordinator or driver please ring 0705254363.

## Doctors Surgeries

### Swavesey Surgery

(01954) 230202  
Out of hours 111

Website:- [www.swaveseynhs.uk](http://www.swaveseynhs.uk)  
Information & updates on facebook page

### Over Surgery

(01954) 231550  
Out of hours 111

Website:- [www.oversurgerynhs.uk](http://www.oversurgerynhs.uk)  
Information & updates on facebook page

### Longstanton

(01954) 207600  
Out of hours 111

Website:- [www.willinghammedicalpractice.nhs.uk](http://www.willinghammedicalpractice.nhs.uk)

### Bar Hill Surgery

(01954) 780442

Out of hours (01954) 780442 -  
*call will automatically be diverted*  
Website:- [www.maplebarhill.co.uk](http://www.maplebarhill.co.uk)

### Fenstanton

7E High Street, Fenstanton  
01480 461873

Out of hours 111

Website:- [www.riverportmedicalpractice.nhs.uk/location/fenstanton/](http://www.riverportmedicalpractice.nhs.uk/location/fenstanton/)



Cambridgeshire & Peterborough  
**ageUK**  
Let's change how we age

## Swavesey Community Warden Service

Do you or a loved one need support to live independently at home?

### How can we help

Wardens assist older people to continue to live independently at home by providing contact and support, either by a personal visit or telephone call.

You will be entitled to a two week free trial

### Contact Us



07812 496004



[wardens@ageukcap.org.uk](mailto:wardens@ageukcap.org.uk)



[www.ageukcap.org.uk](http://www.ageukcap.org.uk)



## East Anglian Air Ambulance launches £8.2m appeal to build new Cambridge base

### *Charity calls on people and businesses in Swavesey to help protect the future of their local air ambulance*

East Anglian Air Ambulance has today launched an urgent £8.2 million fundraising appeal to build a new air base in Cambridgeshire, after securing planning permission for a new site outside Fulbourn.

The charity must relocate before losing its current home at Cambridge Airport which is due to close in 2030. Without a Cambridge base, East Anglian Air Ambulance's service would be cut in half, leaving just one airbase in Norfolk and dramatically increasing response times to people facing life-threatening emergencies across the region.

The new Cambridge Air Base Appeal aims to fund the construction of a new and improved facility on land at New Shardelowes Farm, ensuring the charity can continue to deliver hospital-level critical care to patients in Cambridgeshire, Bedfordshire, Norfolk and Suffolk for decades to come.

Without a centrally located base, crews would take significantly longer to reach patients when every second counts - putting nearly 1,000 lives a year at risk.

Matthew Jones, CEO of East Anglian Air Ambulance, said: "We are at a pivotal moment in our history. For nearly two decades, we have worked in partnership with the owners of Cambridge Airport, Marshall, to ensure that our Cambridge-based helicopter, critical care cars and specialist crews can reach people in their greatest time of need, quickly and effectively.

"Now, this vital part of our lifesaving service is under threat. We've moved swiftly to secure planning permission for a new site in Fulbourn, but we must now raise the funds to build the base. This is our biggest and most ambitious challenge yet, and we can't do it alone. We urgently need the public's help."

The appeal has the backing of several local people whose lives - or the lives of their loved ones - were saved by East Anglian Air Ambulance's Cambridge crew.

They include:

- [Mia Cornelius](#), from Haverhill, whose baby son Clayton was saved after being born prematurely at just 26 weeks in 2025
- [Jonathan Moran](#), from Peterborough, who suffered a brain haemorrhage in September 2022
- [Deryck Thake](#), from Cambridge, whose 19-year-old son was treated by the Anglia Two (Cambridge) crew following a road traffic collision in 2025

Concluding, Matthew Jones said: "The vision for our new Cambridge base isn't just about bricks and mortar. It's about making sure people in life-threatening emergencies across our region continue to receive the very best care, fast.

"It will also allow us to meet increasingly complex operational needs, provide world-class training facilities and protect our ability to serve our communities for generations to come.

"We don't just transfer patients to hospital - we bring hospital-level treatment to them, giving them the best possible chance of survival when every second counts. It takes a team to save a life, and we hope the public will help us in this crucial appeal. Whatever people can give will be greatly appreciated."

East Anglian Air Ambulance has made it easy for people across Cambridgeshire, Bedfordshire, Norfolk and Suffolk to support the appeal:

- Text BASE10 or BASE20 to 70480 to donate £10 or £20 (Texts cost the donation amount plus one standard network rate. Donors will opt in to hear more from the charity; to donate without receiving further information, text BASENOINFO.)
- Call the donation hotline on 03450 669 999 (Monday–Friday, 8.30am–5pm)
- Donate online at [eaaa.org.uk/base](https://eaaa.org.uk/base)
- Return a donation or direct debit pledge using appeal envelopes being delivered to households across the region
- Donations of £175 or more will be recognised by adding a supporter's chosen name to one of the charity's helicopters.

Supporters can also fundraise by hosting events or taking on challenges - from bake sales and charity balls, to marathons, skydives and other adventurous activities. Schools, businesses, sports clubs and community groups are also being encouraged to make East Anglian Air Ambulance their chosen charity and fundraise together in ways that work for them.

The charity estimates that if every household across Cambridgeshire, Bedfordshire, Norfolk and Suffolk gave just £10, the appeal target would be exceeded immediately\*.

Working alongside the emergency services, East Anglian Air Ambulance responds to the most serious one per cent of emergency calls. In 2025 alone, its crews provided critical care to 1,845 people, including 151 children. From its Cambridge base, the Anglia Two helicopter can reach approximately 1.2 million people within just ten minutes.

For more information or to donate, visit [eaaa.org.uk/base](https://eaaa.org.uk/base)

## SCHOOLS INFORMATION

### Swavesey Primary School Early Years and Playwork Centre Wraparound Care and Early Years Provision - Mon to Fri - term-time

Registration Fee £15 per family for using Breakfast and/or After School Club

#### Breakfast Club 7.30 am - 8.55 am

3+ year olds to Year 6 children: £6.50 per child per session

#### After School Club 3.15 pm to 6.00 pm

For Reception to Year 6 children: £13 per child, family rate £12 per child

#### Early Years 9.00 am to 3.00 pm (full day) or morning (9-12/1) or afternoon (12-3)

For 2½ year olds to 4 year olds

Places for funded children up to 30 hours per week

Charged sessions:-

3-4 year olds £17.25 half-day and £34.50 full-day.

2 year olds £24.45 Mornings only

£5.75 for lunch hour (12-1)

For more information and to register:-

[www.swavesey.cambs.sch.uk](http://www.swavesey.cambs.sch.uk) (Select EY & P)

[eyandp@swavesey.cambs.sch.uk](mailto:eyandp@swavesey.cambs.sch.uk)



9.30 am – 10.15 am  
Music Theory classes for ALL

10.15 am – 11.00 am  
Little Rockets for 3-9 yrs  
Join the Band & Find your voice!



11:00 am – 12:00 pm  
The BIG Rock School for  
Drummers, vocalists or guitarists  
with some experience or have  
been playing for some time aged  
10 yrs+



10.15 am – 11:00 am  
The BIG Sing!  
(aka Choir/Sing up – 7 – 77yrs! ALL AGES)

11am – 12pm  
The BIG Orchestra!  
An opportunity for children,  
parents, adults & community in  
an orchestra together.  
Everyone welcome... beginners  
to experienced players!

# Swavesey Music School

admin@swaveseymusic.co.uk  
Swavesey Village College CB24 4RS



## 1<sup>st</sup> Swavesey Scout Group

The 1st Swavesey Scout Group continues to provide a vibrant and engaging programme for young people, fostering teamwork, resilience, and a love for the outdoors. From the youngest Beavers to the more experienced Scouts, there's a sense of adventure and camaraderie that defines this thriving group.



As Robert Baden-Powell, the founder of the Scouting movement is indicating our scout group needs new volunteers in all of our sections. In Beavers, Cubs and Scouts we are losing 1 volunteer in the next few months due to a variety of reasons.

We need new volunteers to come and join each team to help us support all of the young people who are part of and want to be part of our scout group. All new volunteers will be well supported by our current volunteers. Scouting itself provides online training to get you started.

What skills do you need to be a scouting volunteer? Enthusiasm, Curiosity, Kindness and a Willingness to learn new things. As well as learning new skills it is a chance to teach our young people on subjects you find interesting.

If you want to know more email any of the people below and ask as many questions as you like. We will all do our best to help you.

Scouts meet on a Wednesday evening at 7pm. Cubs meet on Tuesday at 6.15pm. Beavers at 6pm on Thursday.

Beavers (ages 6-8) [john.pawson@1stswaveseyscoutgroup.org.uk](mailto:john.pawson@1stswaveseyscoutgroup.org.uk)

Cubs (ages 8-10½) [steven.wilson@1stswaveseyscoutgroup.org.uk](mailto:steven.wilson@1stswaveseyscoutgroup.org.uk)

Scouts (ages 10½ -14) [ally.parker@1stswaveseyscoutgroup.org.uk](mailto:ally.parker@1stswaveseyscoutgroup.org.uk)



**We help all girls know they can do anything.**

## Volunteer with us

We show girls from 4 to 18 a world of possibilities big and small. One where every girl can laugh and learn and be herself. Girlguiding is what each girl wants it to be. It might be the thrill of doing something for the first time. Songs around a campfire. The buzz of getting a new badge. Coming home exhausted and full of stories. It's a space where she can be herself, get creative, explore, and most of all have fun.

## How can I get involved?

You choose the volunteer role that matches your skills and time available. You can be a leader, a helper, a treasurer, a fundraiser, an administrator, a trainer, the list goes on and on...

"We're awesome as we help girls to thrive and grow because we are all part of a huge family"

**Volunteer, Bedfordshire**

**Are you interested to find out more?**

**Get in touch:**

Email:  
caroline@overroad.co.uk  
or sign up here:  
[www.girlguiding.org.uk/volunteer](http://www.girlguiding.org.uk/volunteer)

**You're amazing → Pass it on**



## PARISH & COUNTY NEWS

### News From Your DC Sue Ellington

Dear All

I am so delighted that the meridian is being revived. This is such a useful and key part of what living in a village community is all about. To know what events, courses, facilities and organisations are around us. The local services, individuals and traditions which hold us together. May it go on for many years to come - Thank you to all who are involved.

I am writing this at the end of April before the elections so I can only say thank you for your support over the last 20 years as your District Councillor. I hope I am still your District councillor when you read this but if not good wishes to my successor - if I can be of any help just give me a ring.

There are significant changes happening after the elections. Firstly the Government has to tell us which current Authorities will form the Unitary Authority to cover Swavesey. Then Councillors in the District Council will have to work with the councillors from those Authorities to bring together all the services which will be needed from May 2027 when the Unitary Councillors will be elected. One year of shadowing will follow - a recipe for confusion if ever I saw one! And in May 2028 the District Authority will close. Inevitably existing officers who know the issues in their areas will be appointed to new posts in the new Authority but many may leave with the danger of losing much of that knowledge and relationship with local people.

The next change will be the introduction of the Development Corporation - a Government organisation which will have the power to authorise planning agreements for strategic and local growth including housing, business premises, and transport. This corporation would be similar to the one which oversaw the development of Milton Keynes but much bigger. I am anxious that this may override local concerns without any democratic power to vote them out of office. The growth in centralising government away from local people is worrying.

Anyway, I hope everybody has a great summer and the global issues do not create disruption to all our lives. Whether I am your councillor or not I am always willing to help if I can and use the knowledge I have gained over the years.

Sue Ellington - 07774146331

## SWAVESEY PARISH

### Parish Council News April/May 2026

The current Parish Council term of office ends this May, Parish Cllrs are elected for 4 years. There will be no Parish Poll though on 7<sup>th</sup> May as only 10 nominations were received for the 11 Cllr seats, therefore those 10 are elected un-opposed. The Cllrs taking office will be: Lisa Boyes, James Dodson, Sue Ellington, Doug Hunt, Martin Johnston, Jonny Kerley, Colin Parsons, Sue Rogers, Paul Twinn, Will Wright.

The Council would like to thank Rachel Vollerthun, who has not stood for re-election, for her time as a Parish Cllr over the past four years.

The one vacancy will be advertised for co-option after the first meeting of the new Council, which will be 18<sup>th</sup> May. If you are interested in becoming a Parish Cllr, please contact the Clerk who can let you know what that would involve. [clerk@swavesey-pc.gov.uk](mailto:clerk@swavesey-pc.gov.uk) There is information on the Parish Council and being a Cllr on the website at:

[www.swavesey-pc.gov.uk](http://www.swavesey-pc.gov.uk)

### County Council Business

Highways maintenance continues, potholes along Boxworth End and Station Rd have now been marked and should be filled soon. Whitton Close also, we understand. All highways defects can be reported by anyone via the County Council's online Report It form:

<https://www.cambridgeshire.gov.uk/top-tasks/report>

The PC continues to liaise with our County Councillor to discuss all the outstanding issues. A monthly report from Cllr Chris Poulton is also published on our website:- <https://www.swavesey-pc.gov.uk/the-council/county-district-councillors/>

Guided Busway fencing project – as you will probably be aware a major H&S project is underway along the busway, to install fencing along its entire length. That fencing is scheduled to reach this area in around a year and as part of that only the formal crossing points will remain open. In Swavesey parish that means that only the 3 main droves will be crossing points. A campaign is underway asking for support to keep some of the informal crossings open, specifically Moore Brooke in the nature reserve and Covel's drain bank. More information on our website.

## COUNCIL NEWS

### District Council

Local Government Reorganisation proposals – we await a decision from Government on how they will split up the County into new Unitary Authorities. A decision is expected in July.

7<sup>th</sup> May will see elections take place for Cllrs for South Cambridgeshire District Council.

### Great British Spring Clean!

On Sunday 22<sup>nd</sup> March, a group of enthusiastic residents joined together to carry out a village-wide litterpick as part of the Great British Spring Clean. Our thanks to the 30+ people who took part, including a number of very enthusiastic cub scouts.

### Planning

A number of planning applications were commented on, details can be found in the Minutes of the meetings, published on the website.

The PC continues to talk to planners and developers about the issues around the proposed logistics parks alongside the A14.

### Drainage

The Environment Agency has now published confirmation that funding is in place to carry out repair work to the Brownshill Staunch on the River between Over and Swavesey. This is something the PC has campaigned for, alongside many other local villages for some time now.

### Recreation Green

The Parish Council continues to work with the Football Clubs on maintenance of the Green. No adult football games have been played on there this season due to the dry weather last year and the effect it had on the ground conditions. The very dry start to this spring is now not helping, hence areas of the Green being fenced off to protect work which is taking place.

### Community Orchard

Look out for the information on the Orchard Bioblitz Day, happening on Saturday 27<sup>th</sup> June. Lots taking place so if you'd like to be involved, please do come down to the Orchard on 27<sup>th</sup> June.

# COUNCIL NEWS

## Annual Parish Meeting

On 15<sup>th</sup> April the Annual Parish Meeting was held in the Memorial Hall. This is not a Parish Council meeting but an opportunity for various clubs, charities and organisations in the community to update on the past and forthcoming year.

Next year, the format of this meeting is planned to change, to move it to a Saturday and hold a 'celebration of the village' event, in the Memorial Hall, so residents can find out what is happening in the village, clubs they can join, events they can attend or how to become trustees of some of the village facilities or support the many activities which take place in the village. More details to follow.

Further details on everything that is discussed at the Parish Council meetings can be found in the Minutes and on the Council's website at: [www.swavesey-pc.gov.uk](http://www.swavesey-pc.gov.uk)

<b>Swavesey Parish Council Website: <a href="http://swavesey-pc.gov.uk">swavesey-pc.gov.uk</a></b>		
<b>Parish Councillors</b>	<b>Telephone (01954)</b>	<b>E-mail address</b>
Doug Hunt (Chair)	232478	dhunt@swavesey-pc.gov.uk
Colin Parsons (Vice-chair)	610357	cparsons@swavesey-pc.gov.uk
Lisa Boyes	07747 002296	lboyes@swavesey-pc.gov.uk
Sue Ellington	07774 146331	sellington@swavesey-pc.gov.uk
James Dodson	230560	jdodson@swavesey-pc.gov.uk
Jonny Kerley	231304	jkerley@swavesey-pc.gov.uk
Martin Johnston	200605	mjohnston@swavesey-pc.gov.uk
Sue Rogers	0777 2247673	srogers@swavesey-pc.gov.uk
Paul Twinn	488578	ptwinn@swavesey-pc.gov.uk
Warren Wright	203172	wwright@swavesey-pc.gov.uk
<i>Vacancy</i>		
Clerk: Linda Miller	202982 07458 302193	clerk@swavesey-pc.gov.uk
District Councillor: Sue Ellington Swavesey Ward	07774 146331	
County Councillor: Chris Poulton Papworth & Swavesey Ward		chris.poulton@cambridgeshire.gov.uk
Memorial Hall Administrator: Nicole Mullee	07963 861791	memorialhall@swavesey.org.uk
Swavesey Parish Council meets on the 4 <sup>th</sup> Monday of each month for Full Council, with occasional 2 <sup>nd</sup> Thursday of each month meetings for Planning items. All meetings are held in the Memorial Hall at 7.30pm. There is always a 10 minute public forum at the start of each meeting and members of the public are welcome to attend and listen to Council discussions.		



## The George Long Charity For Swavesey Memorial Hall 2025-2026

It has been another busy year for the hall, with the long dry summer in 2025 it certainly was a great year to have Solar Panels on our roof!

This past financial year we have managed to complete the changeover of the corridor lights to LED ones, with the help from South Cambs DC Community Chest and a 106-grant application we are shining brightly. We have also been lucky enough at the start of March to complete the refurbishment of the Fascia boards around the front and side of the building, this was also funded by an application of 106 monies from Swavesey Parish Council.

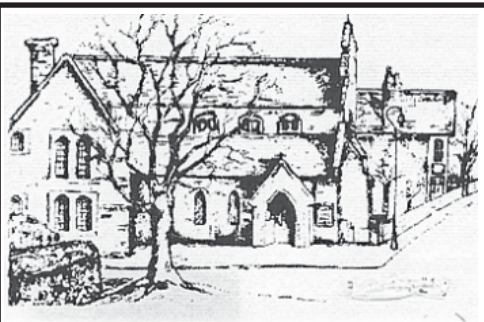
Bookings at the Hall are in abundance with many diverse groups using the hall on a weekly basis and some are daily visitors. We welcome young and old to use our community hall and it's always a popular option for children's parties, exercise classes, craft and sewing groups. We have a good-sized Meeting Room which is used for workshops, training and of course many meetings.

As we move forward in 2026, we have now taken on the managing of the Snooker Room from a maintenance point of view. It is hoped in 2026 that we can apply for grant funding to help insulate the room, replace the existing heaters with a new heating/air con unit and provide thermal blinds for the windows. The Snooker Room is extremely well used, and it's hoped we can bring more comfortable surroundings to the users.

We always have lots of new ideas and projects we love to investigate, however 2026 might just be a maintenance one for the Hall as we use our efforts to enhance the Snooker Room.

On behalf of the Trustees, I would like to take this opportunity to thank everyone who uses the Hall and look forward to new people visiting and using the facilities we have to offer.

Martin Johnston  
Chairperson  
The George Long Charity  
[memorialhall@swavesey.org.uk](mailto:memorialhall@swavesey.org.uk)



**SACRED HEART OF JESUS**  
**Roman-Catholic Parish**  
 19 Needingworth Road, St Ives, Cambs. PE27 5JT

**Priest in Charge: Fr Trindade J Monteiro**

Tel: 01480 462 192  
 www.sacredheart-stives.org.uk  
 email: office@sacredheart-stives.org.uk

Mass Times:  
 Saturday 17.00 (Anticipatory)  
 Sunday 09.00 and 11.00

**SACRED HEART RC PARISH HALL**

**AVAILABLE FOR HIRE**

Sacred Heart St Ives  
 19 Needingworth Rd, St. Ives,  
 Cambridgeshire, PE27 5JT

Suitable for Community Groups,  
 Conferences & Meetings,  
 Coffee mornings, Classes & Parties.

Our parish hall is now available to rent  
 at £20 an hour An additional fee of £25  
 will be applied for use of the kitchen.

Guest WiFi available

Please enquiry on tel.:  
 (+44) 1480 462 192

e- mail:

[office@sacredheart-stives.org.uk](mailto:office@sacredheart-stives.org.uk)

Website:

[www.sacredheart-stives.org.uk/the-church-hall](http://www.sacredheart-stives.org.uk/the-church-hall)

**CHIROPODIST/  
 PODIATRIST**

I can offer a professional service

For further details please ring

**01954 201256**

**07494 196065**

Biomechanical assessments &  
 orthotic therapy also available.

*Michelle Dolan*  
 HCPC Registered Chiropodist/Podiatrist  
 CH34864

e-mail: [michelledolan@outlook.com](mailto:michelledolan@outlook.com)

**FLOOR  
 COVERINGS**

Cambridgeshire's largest flooring showroom est. 1996

◆  
 Luxury Vinyl Tiles (LVT)  
 Laminate - Hardwood & Natural  
 Over 3500 Carpet samples  
 Cushion Vinyl

◆  
**FREE** no obligation quotes.  
 Fitted by fully employed craftsmen with over  
 100 years experience.

◆  
**01223 233233**

[www.floor-coverings.net](http://www.floor-coverings.net)

◆  
**Showroom:**

Unit 31-32 Dry Drayton Industries, Scotland Road,  
 Dry Drayton, Cambridge CB238AT

Open: Mon - Sat 9-5



Scan to see our showroom



**A Message From Pastor Bob**

**Black Bart was a professional thief whose very name struck fear as he terrorised the Wells Fargo stage line. From San Francisco to New York, his name became synonymous with the danger of the frontier. Between 1875 and 1883 he robbed 29 different stagecoach crews. Amazingly, Bart did it all without firing a shot. Because a hood hid his face, no victim ever saw his face. He never took a hostage and was never trailed by a sheriff. Instead, Black Bart used fear to paralyse his victims. His sinister presence was enough to overwhelm the toughest stagecoach guard.**

Long before we humans built cities, wrote poetry, or sent machines into space, survival was the only game in town. Every rustle in the grass might have been a predator. Every shadow could have hidden danger. In that world, fear was not an inconvenience, it was an ally. It sharpened senses, quickened reflexes, and mobilised the body for immediate action. Without it, our ancestors might not have survived the predators of the plains or the perils of the hunt.

I would suggest that our brains are a gift from God; from that point of view, it would seem reasonable to accept that we should use this 'thinking tool' for the very best purposes. The great capacity that each of us has, to be creative, to dream dreams, to devise plans and develop direction for our lives is a wonderful thing.

Our brain gives us the ability to choose interests, to decide our options for education and career, but in all of this we have our limits, all our wisdom, our planning and our skill can only carry us so far. For all the capacity and power of our minds we are fragile creatures. We succumb to fear rationale and irrational, and when we find ourselves at this juncture it is always good to talk. Our emotions are a normal part of who we are, but we were never meant to sit and stew.

The kettle is on let's have a chat.

Pastor Bob  
 Bethel Baptist



### Club Vintage - Wednesdays 2-4pm

A warm welcome awaits older people and the club is dementia-friendly. There is a small £3 weekly charge. Enjoy a rotating variety of activities such as chair-based exercise, singing, bible-based crafts, quizzes, games and entertainment from others.



### Compass Café - Thursdays 10:30am-12pm



You will receive a very warm welcome at our community run cafe. Enjoy reasonably priced coffee, tea and homemade cakes.

### LITTLE LIGHTS - Fridays 10am-12pm

Baby & toddler group. All are welcome, bumps, babies, toddlers, parents and carers. Drop in at anytime for as long as you need. Only £2 per family, including drinks & snacks for all! We hope you can come along and join us!



### The Hub - Youth Group - Fridays 7-9pm



Open to all year 6 and secondary aged children. Come along and meet up with friends, chat, play games, listen to music and much more! Snack bar also available. £1 entry fee. Parents must complete a permission form.

### Sunday Services - Sundays 10:45am

You are warmly invited to join us for our weekly services followed by coffee in our compass room. Our services are open to all and are family friendly with children's Sunday School groups for all ages! Every first Sunday of the month is our alternative all age, café-style service which include refreshments around tables, conversation and maybe even some crafts! We have a special Communion service once a month on the 3rd Sunday. At Bethel we are brought together by our Faith, but what truly makes us family is our passion to serve God and love one another through every season.



### Upcoming events for your diaries:

## Comberton Gospel Choir

7:00pm Saturday 27<sup>th</sup> June @ Bethel Baptist Church - Comberton Gospel Choir are returning for an exciting evening of Gospel music.



### Save the date: Swavesey Village Carols

Saturday 12<sup>th</sup> December @ Market Street - The Village Carols will be back again this year! Further details will be published nearer the time!

### CONTACT US

Pastor Bob - [pastorbob@bethelbaptistchurch.org.uk](mailto:pastorbob@bethelbaptistchurch.org.uk)

Sue Hope (Secretary) - [secretary@bethelbaptistchurch.org.uk](mailto:secretary@bethelbaptistchurch.org.uk)

Charlotte Holmár (Administrator) - [admin@bethelbaptistchurch.org.uk](mailto:admin@bethelbaptistchurch.org.uk)

[www.bethelbaptistchurch.org.uk](http://www.bethelbaptistchurch.org.uk)

[www.facebook.co.uk/SwaveseyBethel](https://www.facebook.co.uk/SwaveseyBethel)

## Welcome to St Andrew's, your Parish Church!



Please join us at 11am on any Sunday morning for a service at St Andrew's. On the fourth Sunday of the month, we have our All Together Worship service and on the other Sundays there is a Holy Communion service. At 8pm on the first Thursday of every month, we have fifteen minutes of silence and prayer followed by Compline remembering the people of Ukraine and other countries affected by war.

You can find information about all our services and events on Facebook and online at A Church near You: <https://www.achurchnearyou.com/church/2834/service-and-events/events-all/>

### Ministry Team:

Rev'd Stephen Dove (Team Rector): [stephen@5folds.org.uk](mailto:stephen@5folds.org.uk).

Rev'd Ed Green (Team Vicar): [ed@5folds.org.uk](mailto:ed@5folds.org.uk)

Canon Jan Payne (Licensed Lay Minister): [jan@5folds.org.uk](mailto:jan@5folds.org.uk)

Colin Smith (Benefice Administrator): 01954 203459  
[admin@5folds.org.uk](mailto:admin@5folds.org.uk)



### Junior Church



This is our Sunday School for children under 11. We sing songs, draw and make things and most of all, learn about Jesus. We meet every Sunday at the back of church. Do join us.

### Emmaus House Group

We are a small group of people who meet every other Wednesday morning on Zoom to learn more about God through studying the Bible. We choose our own subjects and ask lots of questions but don't always find the answers! More details from Nicky Carne: [nicky\\_carne@hotmail.com](mailto:nicky_carne@hotmail.com).



### Compass Café



Meet us at the Compass Café - Swavesey's community café every third Thursday of the month, 10:30am - 12 noon. Enjoy our wonderful cakes and coffee.

## St Andrew's Church



### Craft Group



Our group meets every other Wednesday to work together on group activities; have you seen our decorations on the car park cross? You can bring your own craft activity to work on or just come to enjoy the company over a hot drink and cake. Details from Jacqui Fuller: [jacqui\\_fuller@hotmail.com](mailto:jacqui_fuller@hotmail.com)

### Friends of St Andrew's Group

There has been a church on this site for more than 900 years and the current building has served many generations well. It has been used for weddings, baptisms, funerals and worship over the years.

As you can imagine, the age of the building and its churchyard means that upkeep and maintenance are required to maintain a healthy state, and ensure availability for future generations.

As you may know, we are hoping to set up a Friends of St Andrew's group, which will consist of anyone who has skills to offer and/or anyone who can support us by signing up as a "friend". If you now live away from Swavesey and were married, christened or have relatives who used to live in the village, please consider becoming a friend.

We will be sending out more information in due course.

Dr Larry Amure Lay Chair - Swavesey PCC.



### Events at St Andrew's in 2026

Look out for these events:

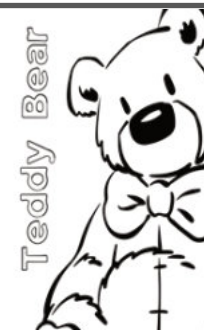
Teddy Bear Zip Wire - Sat, 27<sup>th</sup> June, 2.00 - 4.00 pm

Crafternoon - Saturday, 3<sup>rd</sup> October

#### Teddy Bear Zip Wire Challenge

Saturday, June 27<sup>th</sup>  
2pm - 4pm

Can your toy ride the zipwire?



## Community Groups & Charities

Swavesey Sustainability Hub	The Sustainability Hub is a community group that offers space and support for people to realise their ideas for a more sustainable way of life. Contact: <a href="mailto:rvollerthun@gmail.com">rvollerthun@gmail.com</a> Website: <a href="http://www.thesustainabilityhub.biz">www.thesustainabilityhub.biz</a>
Sheddit!	Sheddit! is the community shed for Swavesey and surrounding areas. The group works on a range of projects and welcome new members who enjoy making things from wood and metal. Contact: Phil Cohen 07957 422292 Website: <a href="https://shareborrowconnect.org/">https://shareborrowconnect.org/</a>
Cam Sight	Cam Sight is a local charity which offers support to anyone with a visual impairment, along with their family and carers. We meet on the 4th Wednesday afternoon of each month in Bar Hill. For more information please telephone Joan in Bar Hill on 01954 200622 or Alison at Cam Sight on 01223 420033 or email <a href="mailto:alison@camsight.org.uk">alison@camsight.org.uk</a> . For more info see:- <a href="http://www.camsight.org.uk">www.camsight.org.uk</a>
Cambridgeshire Hearing Help	CHH is a charity that helps people with hearing loss. Volunteers service NHS hearing aids and provide batteries and they attend Swavesey quarterly at Thistle Green. Advice on any aspects of hearing loss is available at a hearing help session or by calling the office on 01223 416141, E-mail: <a href="mailto:enquiries@cambridgeshirehearinghelp.org.uk">enquiries@cambridgeshirehearinghelp.org.uk</a> Website: <a href="http://cambridgeshirehearinghelp.org.uk">cambridgeshirehearinghelp.org.uk</a>
Care Network	Care Network supports volunteers, encourages independence and develops good neighbour projects. We provide the Welcome Home from Hospital service across Cambridgeshire. Contact:- Care Network, 5 Broadway House, 149-151 St Neots Rd, Hardwick, Cambridge, CB23 7QJ (tel: 01954 211919). Website: <a href="http://care-network.org.uk/">care-network.org.uk/</a>
Compass Cafe	Meets every Thursday morning from 10.30 until 12.00 at Bethel Baptist Church. Contact Sue Ellington on 01954 202923 or <a href="mailto:sue.ellington@virgin.net">sue.ellington@virgin.net</a>
Dog Lovers of Swavesey	Dog Lovers of Swavesey is a friendly group where anyone with a love for dogs is welcome with or without dog. Meetings are on the Recreation Green organised through the Facebook group at <a href="https://www.facebook.com/groups/dogloversofswavesey">https://www.facebook.com/groups/dogloversofswavesey</a> where we also exchange tips, ask for advice or have a laugh. Resources are gathered at <a href="https://dogloversofswavesey.co.uk/">https://dogloversofswavesey.co.uk/</a> . Contact: Matt at <a href="mailto:matthewyoung1@btinternet.com">matthewyoung1@btinternet.com</a> or Anita at <a href="mailto:anita.faul@outlook.com">anita.faul@outlook.com</a> Tel 01954 232791
Swavesey Library	A volunteer run community library based in Swavesey Village College. We are able to providing a full range of library facilities being directly linked to the Cambridgeshire County Council library service. For more info see:- <a href="https://www.swavesey-pc.gov.uk/community/swavesey-your-library/">https://www.swavesey-pc.gov.uk/community/swavesey-your-library/</a>
East Anglia's Children's Hospice (EACH)	Put your free time to good use and volunteer at East Anglia's Children's Hospice (EACH) in Milton. Volunteering at a children's hospice doesn't always mean care work and fundraising as there are also tasks such as admin and maintenance of the grounds. Contact:- Clare Bates on 01223 815134, Email: <a href="mailto:clare.bates@each.org.uk">clare.bates@each.org.uk</a>
OWLS Community Car Scheme	Run by DBS checked volunteers the scheme offers a door-to-door service, for medical or some social journeys, to people who are unable to access other forms of transport. Ring 07505 254363 to book a journey, find out more, or to volunteer as a driver Website: <a href="https://www.swavesey-pc.gov.uk/community/owls-community-car-scheme/">https://www.swavesey-pc.gov.uk/community/owls-community-car-scheme/</a>

## CLUB INFORMATION

Army Cadets UK	Swavesey Detachment, No 2 (Cromwell) Company, Cambridgeshire Army Cadet Force meets each Tuesday evening at the Swavesey Village College from 7 pm. New recruits are welcomed from ages 12 years (year 8) to 18 years. <a href="http://www.armycadets.com/county/cambridgeshire-acf/">www.armycadets.com/county/cambridgeshire-acf/</a>																		
Swavesey Five-a-Side Football Club	Currently seeking new members for this long-established club. We play each Wednesday evening from 6:30 to 7:30pm in the new sports hall at Swavesey Village College. Enquiries to Stewart Smith (07803 050234).																		
Swavesey Girlguiding	<table border="1"> <thead> <tr> <th>Unit</th> <th>Evening</th> <th>Contact</th> </tr> </thead> <tbody> <tr> <td>1st Swavesey Rainbows</td> <td>Thursdays</td> <td><a href="mailto:caroline@overroad.co.uk">caroline@overroad.co.uk</a></td> </tr> <tr> <td>1st Swavesey Brownies</td> <td>Mondays</td> <td><a href="mailto:swaveseybrownies@outlook.com">swaveseybrownies@outlook.com</a></td> </tr> <tr> <td>2nd Swavesey Brownies</td> <td>Wednesdays</td> <td><a href="mailto:secondswaveseybrownies@outlook.com">secondswaveseybrownies@outlook.com</a></td> </tr> <tr> <td>1st Swavesey Guides</td> <td>Thursdays</td> <td><a href="mailto:swaveseyguides@gmail.com">swaveseyguides@gmail.com</a></td> </tr> <tr> <td>1st Swavesey Rangers</td> <td>Thursdays</td> <td><a href="mailto:swaveseyrangers@gmail.com">swaveseyrangers@gmail.com</a></td> </tr> </tbody> </table>	Unit	Evening	Contact	1st Swavesey Rainbows	Thursdays	<a href="mailto:caroline@overroad.co.uk">caroline@overroad.co.uk</a>	1st Swavesey Brownies	Mondays	<a href="mailto:swaveseybrownies@outlook.com">swaveseybrownies@outlook.com</a>	2nd Swavesey Brownies	Wednesdays	<a href="mailto:secondswaveseybrownies@outlook.com">secondswaveseybrownies@outlook.com</a>	1st Swavesey Guides	Thursdays	<a href="mailto:swaveseyguides@gmail.com">swaveseyguides@gmail.com</a>	1st Swavesey Rangers	Thursdays	<a href="mailto:swaveseyrangers@gmail.com">swaveseyrangers@gmail.com</a>
Unit	Evening	Contact																	
1st Swavesey Rainbows	Thursdays	<a href="mailto:caroline@overroad.co.uk">caroline@overroad.co.uk</a>																	
1st Swavesey Brownies	Mondays	<a href="mailto:swaveseybrownies@outlook.com">swaveseybrownies@outlook.com</a>																	
2nd Swavesey Brownies	Wednesdays	<a href="mailto:secondswaveseybrownies@outlook.com">secondswaveseybrownies@outlook.com</a>																	
1st Swavesey Guides	Thursdays	<a href="mailto:swaveseyguides@gmail.com">swaveseyguides@gmail.com</a>																	
1st Swavesey Rangers	Thursdays	<a href="mailto:swaveseyrangers@gmail.com">swaveseyrangers@gmail.com</a>																	
Swavesey Spartans	Swavesey Spartans ( <a href="http://swaveseyspartans.co.uk">swaveseyspartans.co.uk</a> ) is a Chartered Standard Football Club affiliated to Cambridgeshire Football Association. The club delivers football for children aged 6 and above. The club helps with the transition to open age football. Colts football ceases at the end of a player's Under 18 season. Open age football for men in Swavesey is available through Swavesey Institute FC (separate entry in this section of the Meridian). Swavesey Spartans FC have an open age football team for ladies playing league games on a Sunday. For more information about Spartans please contact Paul Clarke ( <a href="mailto:swavesey.chairperson@gmail.com">swavesey.chairperson@gmail.com</a> ) or Mrs Paula Land ( <a href="mailto:swavesey.secretary@gmail.com">swavesey.secretary@gmail.com</a> )																		
1 <sup>st</sup> Swavesey Scout Group	All sections meet at the Scout Hut on the SVC site <b>Beavers</b> Day: Thursday 18:00 to 19:00 Contact: John Pawson - Beaver Leader <a href="mailto:john.pawson@1stswaveseyscoutgroup.org.uk">john.pawson@1stswaveseyscoutgroup.org.uk</a> <b>Cubs</b> Day: Tuesday 18:15 to 19:30 Contact: Steven Wilson - Cub Leader <a href="mailto:steven.wilson@1stswaveseyscoutgroup.org.uk">steven.wilson@1stswaveseyscoutgroup.org.uk</a> <b>Scouts</b> Day: Wednesday 19:00 to 20:30 Contact : Ally Parker - Scouts <a href="mailto:ally.parker@1stswaveseyscoutgroup.org.uk">ally.parker@1stswaveseyscoutgroup.org.uk</a> For any other enquiries please email <a href="mailto:info@1stswaveseyscoutgroup.org.uk">info@1stswaveseyscoutgroup.org.uk</a>																		
Swavesey Early Years and Playwork Centre	Swavesey Early Years and Playwork Centre are based in their own purpose-built unit on the primary school site. It comprises Early Years children (aged from 2 years and 6 Months) between 9am and 3pm (formerly Swavesey Pre School) and we provide activities and care for primary school aged children before and after school. Breakfast Club runs from 7.30 am to 9am and After School Club from 3.15pm to 6pm. For information please contact Carol Panther (Early Years and Playwork Manager) by email: <a href="mailto:evandp@swavesey.cambs.sch.uk">evandp@swavesey.cambs.sch.uk</a> or by phone (01954) 273312 Ext 2 or 07803 812221.																		
Swavesey Community Choir	If you enjoy singing and having fun then come and join Swavesey Community Choir. We meet every Wednesday evening in term time at Fenstanton Church Centre, School Lane, Fenstanton from 7.30pm - 9pm. You don't need to be able to read music and no auditions needed, tenor and bass voices particularly welcome. For further details contact Julie Holmes <a href="mailto:julieholmes78@gmail.com">julieholmes78@gmail.com</a> Website: <a href="http://www.swaveseycommunitychoir.co.uk">www.swaveseycommunitychoir.co.uk</a>																		

British Tang Soo Do Institute	British Tang Soo Do Institute practices the Korean martial art of Tang Soo Do. Our club training covers self defence techniques and many aspects of fitness including flexibility, coordination, conditioning, balance and discipline helping to promote a healthy lifestyle. For further information please contact Master Jeff Cockram on 07863 345681 or <a href="mailto:jeff@btsdi.co.uk">jeff@btsdi.co.uk</a> Or see our website: <a href="http://www.btsdi.com">www.btsdi.com</a>
Swavesey Tang Soo Do Club	Swavesey Tang Soo Do have classes on a Monday, Tuesday and Wednesday. Classes are in the primary school main hall at 6pm. The contact details are Master Louise Morton on 07919 050261 or email <a href="mailto:enquiries@swaveseytsd.co.uk">enquiries@swaveseytsd.co.uk</a> . The website is <a href="http://www.swaveseytsd.co.uk">www.swaveseytsd.co.uk</a>
Allotments in Swavesey	Down Hale Road towards the windmill and on the right there are 61 plots, mostly 150 sq yds (125 m2) in area, backed up by eight water tanks. Large yields of a wide range of high quality vegetable, fruit and flower crops can be grown successfully. If you are interested in joining the waiting list contact Val Sage Tel (01954) 230853
British Legion	For information contact:- Secretary - Angela Dye. (01954) 277453. email: <a href="mailto:dyeangela0@gmail.com">dyeangela0@gmail.com</a>
Swavesey Badminton Club	Located at the Swavesey Village College Sports Centre. The Club offers a high standard of play at club nights on Tuesdays 7pm to 8pm and on Fridays from 6.30pm to 9.30pm. We play competitive badminton in the Cambridge leagues and run men's, women's and mixed teams. Contact Helen Taylor on (01954) 230997 Email: <a href="mailto:enquiries@swaveseybadminton.net">enquiries@swaveseybadminton.net</a> Website: <a href="http://www.swaveseybadminton.net">www.swaveseybadminton.net</a>
Swavesey Billiards and Snooker Club	For information/membership please contact Graeme Waites (01954 230113) Email <a href="mailto:graham.waites566@btinternet.com">graham.waites566@btinternet.com</a>
Swavesey Camera Club	At Swavesey Camera Club we are proud to cater for photographers of all standards. For more information visit our website at:- <a href="http://www.swaveseycameraclub.co.uk">www.swaveseycameraclub.co.uk</a> . We meet every Thursday, 7.00 - 9.30pm, 'Carole Shaw Room, SVC. Non-members welcome - £4 charge (first visit free). For further details please ring Simon Shore (01954) 230848
Swavesey Squash Club	Swavesey Squash Club has three international standard squash courts, in our recently refurbished clubhouse, on the Swavesey Village College site. The club has a number of weekly sessions running, suitable for beginners, improvers, and more advanced players. Unlimited use of the facility from £17 a month. A welcoming and active community club with social events and opportunities for competition. Visit our website for more details or contact Ali Loke on 07776 176866/ <a href="mailto:ali@alilokesquash.com">ali@alilokesquash.com</a> . <a href="http://www.swaveseysquash.com">www.swaveseysquash.com</a>
Swavesey & Over Cycling Club	We meet regularly throughout the year, with rides most weekends and also weekdays on spring and summer evenings. As a Cycling UK affiliated club our goal is to explore a joint passion for cycling in a safe, inclusive and social way. We aim to organise events throughout the year from day & weekend rides in the UK and long weekend trips in Europe. Contact: John Craven Email: <a href="mailto:socccommittee@gmail.com">socccommittee@gmail.com</a> Facebook: <a href="https://bit.ly/3GJCKsZ">https://bit.ly/3GJCKsZ</a> SOCC or Website: <a href="https://swaveseyovercc.wixsite.com/socc">https://swaveseyovercc.wixsite.com/socc</a>

Fireflies Netball Club	Friendly local club, everyone welcome, from back-to-netballers to seasoned players. We have teams playing in CDNL and Fenland Netball leagues. Training is on Tuesdays 7-8:30pm at Northstowe Secondary School. First month is free. £15 per month thereafter. Contact <a href="mailto:firefliesnetballclub@gmail.com">firefliesnetballclub@gmail.com</a> for more information.
Over & Willingham Cricket Club	We have 2 open age (adult) cricket teams in the Cambridgeshire Saturday afternoon league playing 40 over cricket between the start of May and the end of August. If you are interested in joining our club, please get in touch with one of the club officials, come along to one of our training sessions or approach any club member on our matchdays (Saturday's). Contact Jane Reeson if you are interested. email - <a href="mailto:reesonhcx46k@aol.com">reesonhcx46k@aol.com</a> ; Telephone 07768 540146; or Facebook - Over and Willingham CC, or Website - <a href="http://overandwillingham.play-cricket.com">overandwillingham.play-cricket.com</a>
Swavesey Music School	Meets every Saturday of term time at Swavesey Village College. For further details see: <a href="http://www.swaveseymusic.co.uk/">www.swaveseymusic.co.uk/</a>
Swavesey District Bridleway Association	A liaison group representing local horse riders whose main aim is to protect existing and create safe new horse riding links between all local villages. New members welcome. Regular Newsletter/ Social events calendar. Please contact Sue Rogers (01954) 232758
Swavesey & District History Society	Meet every third Tuesday in the month, 7.30pm, Carole Shaw room, SVC. Contact Carolyn Redmayne, Secretary (01954) 230037
Swavesey Institute Football Club	Swavesey Institute FC have 2 teams in the Cambs County Saturday afternoon leagues. For information about the club or if you are interested in playing open age (adult) football for the village please contact Martin Pickering on 07737 391445
Linedance	Linedance classes held on Wednesday mornings at the Bethel Baptist Church 9-30 to 11-30 am. Beginners always welcome. Contact Deborah Walker (01954) 231382 Email: <a href="mailto:deborahwalker105@talktalk.net">deborahwalker105@talktalk.net</a>
Swavesey & Over Conservation Society	At the moment we organise interesting walks If you need a lift: Phone: Trevor Grange - 01954 230119 or Pat Miles - (01954) 780485. Guests Are Always Welcome!
Swavesey & Over Tennis Club	Swavesey & Over Tennis Club: Club nights are Mondays and Fridays, 6.30-8.30pm. We welcome new members - further information our website <a href="https://swaveseyovertennis.wixsite.com/sotc">https://swaveseyovertennis.wixsite.com/sotc</a> , or you can email us on <a href="mailto:SwaveseyOverTennis@gmail.com">SwaveseyOverTennis@gmail.com</a> , or call Steve 07393 825027 or Melanie 07453 523999.
Swavesey RADSoc	Friendly local drama group staging two or three productions a year. New members always welcome. Contact: Nathalie Balzano: <a href="mailto:nathaliewoodward@hotmail.com">nathaliewoodward@hotmail.com</a> Visit our website at <a href="http://www.swaveseyradsoc.org.uk">www.swaveseyradsoc.org.uk</a>
Swavesey W.I.	We meet every second Monday of the month at 7.30pm in the Memorial Hall. New members are always welcome to enjoy a variety of invited speakers and have a chat and cup of tea/coffee afterwards. For further information contact Margaret Guest tel (01954) 202757
Women's Walking	Women's Walking on Mondays and Fridays at 10:00am. Meet on Market Street green. Walk for approximately one hour on pathways in and around Swavesey. A chance to exercise and chat. - Reasonably robust footwear recommended. All welcome.

# THE MERIDIAN ADVERTISER

June/July 2026

## Landscaping & Garden Services

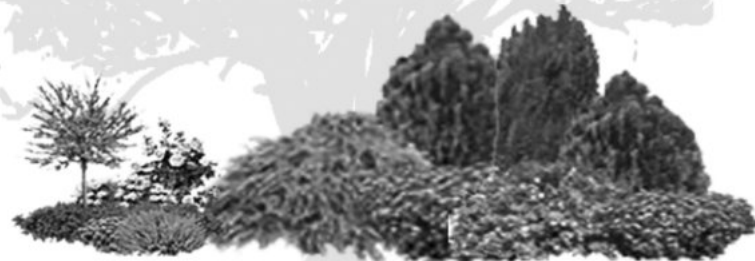
Grower & Supplier of Trees, Shrubs & Hedges



- ✘ Supply and or planting of trees, shrubs and hedges
- ✘ Cutting / Pruning of trees, shrubs and hedges.
- ✘ Land Preparation, spraying, lawn seeding and turfing
- ✘ General maintenance, clearance and repairs
- ✘ Fencing, Gates and Paving

For a FREE estimate phone :- 07786699977

or Email : edwin@parishnet.co.uk



## PAIN AND INJURY CLINIC



Live life pain-free, naturally!  
Start your journey back to better health.

### WHAT WE TREAT.

- Back Pain
- Neck Pain
- Pelvis and Hip Pain
- Headaches
- Sciatica
- Postural Problems
- Jaw Pain
- Sports Injuries
- Shoulder Injuries
- Pain during Pregnancy
- Muscle Spasms
- Mobility Issues

CHIROPRACTIC CARE | SOFT TISSUE THERAPY | REHABILITATION

www.movefreechiropractic.co.uk info@movefreechiropractic.co.uk

91 High Street, Longstanton, Cambridgeshire, CB24 3BS 07405426244

Made with PosterMyWall.com

Contact for  
**FREE**  
to find out if  
chiropractic is  
right for you.

## Rothwell's Carpet Cleaning

**Carpet, Stone Floor,  
Upholstery & Rug Cleaning**

*A few points that make us stand out,*

Rothwell's has been in business since 1993

We're an honest local family firm.

Our large truck mounted machines mean more cleaning & drying power for the best results possible.

Members of both the NCCA and TACCA.

We will move the furniture.

100% satisfaction or it's FREE.

*Call Oliver and Max Campbell  
for expert help today.*

**01223 832 928**

**www.Rothwells.biz**

## C & C BLINDS

*Specialists in Blinds | Any size | Any colour*



Vertical Blinds • Roller Blinds  
Venetian Blinds • Repairs • Roman • Pleated  
Perfect Fit • Wooden • Roof Blinds  
Awnings • Fitting Service

Free Estimates & 1 Year Guarantee

**10%  
OFF**  
With this  
leaflet

**Tel: 01223 211 171 • Mob: 07761 262070**

**Email: colincoleman64@hotmail.com**

# RPJ SOLUTIONS

## PAINTING SOLUTIONS

### INTERIOR AND EXTERIOR

CALL TODAY FOR MORE INFORMATION  
AND TO ARRANGE A FREE QUOTE!

 RPJ Solutions

Phone: 07794 732097

Email: ryan@rpjsolutions.co.uk

Web: www.rpjsolutions.co.uk

# ALEX ARTHURS

## BUILDING SERVICES

ALL ASPECTS OF BRICKWORK UNDERTAKEN

EXTENSIONS • TRADITIONAL BRICKWORK • ALTERATIONS  
GARDEN WALLS • CHIMNEY REBUILDING • REPOINTING  
FIREPLACES • STONE SILLS AND THRESHOLDS

PAVING • SLABS & NATURAL STONE • BLOCK PAVING  
CONCRETING • GROUNDWORKS • FENCING • DECKING

FOR A FREE QUOTATION & ADVICE CALL ALEX ARTHURS

01954 232050 or 07841 433652



**wilderspin**  
GARAGE LTD

*A local family-run business*

MOTOR  
HOME SERVICING -  
MOT'S & HABITATION CHECKS  
ALL DONE ON SITE



## SERVICING & REPAIRS

EXHAUSTS | BATTERIES | TYRES | CLUTCHES | BRAKES | TIMING BELTS

## M.O.T. TESTING CENTRE

CLASSES 4,5 & 7 | MOTOR HOMES | MINI BUSES  
CARS | VANS | LIGHT COMMERCIAL

**FREE**  
USE OF  
COURTESY CARS

AIR  
CONDITIONING  
SERVICING

**FREE**  
COLLECTION AND  
DELIVERY SERVICE

OAKTREE ROAD | FEN DRAYTON | CB24 4SS

Tel: 01954 230273 | Email: wilderspingarageltd@gmail.com

www.wilderspin-garage.co.uk





We're local art consultants passionate about connecting art lovers with talented artists and exceptional work.

Explore our website or visit our gallery in Royston.

You can also get in touch to arrange a private viewing or a personalised home consultation.

hello@fineartfinder.co.uk / 01763 299 323



**FINE ART FINDER**

[fineartfinder.co.uk](http://fineartfinder.co.uk)

MODERN PHILOSOPHY  
**REALLY...**

THANK YOU FOR  
MANPLAINING THAT TO ME

## Sales: Servicing Salt

- ▶ Supply & Installation Service
- ▶ Servicing & Repairs
- ▶ Drinking Water Systems
- ▶ Salt Delivery & Collection

[www.aquastream-softeners.co.uk](http://www.aquastream-softeners.co.uk)

Unit 17 Meridian, Buckingham Business Park, Anderson Road, Swavesey, Cambridge, CB24 4AE

**AQUASTREAM**  
Water Softeners limited

01954 230898



**Authorised  
Ecowater & Kinetico  
Dealership**

 **Kinetico**  
water systems

**ECOWATER**  
SYSTEMS  
  
Your Water. Perfected.



## Achieve the future you want

**We all imagine our future differently.**

Whatever your goals, we believe there is value in taking advice from someone you trust. We will work with you to plan, grow and protect your financial future.

**Let's start a conversation.**

**James Tait**

BA (Hons) DipPFS  
Cert CII (MP & IR)

**Adviser**

07768 305151  
[james.tait@sjpp.co.uk](mailto:james.tait@sjpp.co.uk)

Associate Partner Practice

**St  
James's  
Place**

Willow Bay Financial Partners Ltd is an Appointed Representative of and represents only St. James's Place Wealth Management plc (which is authorised and regulated by the Financial Conduct Authority) for the purpose of advising solely on the group's wealth management products and services, more details of which are set out on the group's website [www.sjpp.co.uk/products](http://www.sjpp.co.uk/products). The 'St. James's Place Partnership' and the 'St. James's Place Partner and Partner Practice' are marketing terms used to describe St. James's Place representatives.

SJP Approved 16/07/2025

SJP05704\_05 03 (0/24)



## Andy Tibbett & Sons Painting & Decorating



- \* All internal & external work carried out to a high standard
- \* Trade references can be supplied
- \* Very competitive pricing
- \* A prompt & polite service from a name you can trust

Telephone: 01954 230810

Mobile: 07717 493723

Email: [andrewtibbett@hotmail.co.uk](mailto:andrewtibbett@hotmail.co.uk)





169 St. Neots Road,  
 Hardwick, Cambridge CB23 7QJ  
 Mon.–Fri. 8.30am –10.30am  
 4.30pm–7.00pm  
 Saturday 9.00am–11.00am  
 Sunday 10.00am –11.00am  
 Tel: 01954 210250

Unit 1 Pendrill Court, Ermine Street North  
 Papworth Everard, Cambridge CB23 3UY  
 Monday, Wednesday, Friday 11.30am–1.30pm  
 Saturday 12noon–1.30pm  
 Tel: 01480 831615

Laura Wood MA, VetMB, MRCVS  
 Simon Shore MA, VETMB, MRCVS  
 Dragan Tomovic BVSc, MRCVS  
 Consultations by appointment only

# G B Builders

NO JOB TOO SMALL

## FOR ALL MAINTENANCE RENOVATIONS AND DIY WORK

All general building repairs & odd jobs  
 Specialist in Painting & Decorating  
 Groundwork & Grass cutting

- Fencing
- Plumbing
- Carpentry
- Roofing
- Tiling
- Drainage
- Brickwork & Plastering
- Driveways, Paths, Patios
- Slabbing
- Concreting
- Blockpaving
- Guttering

Call Today  
 07877 742420  
 Or 01480 437511  
 g.builders@yahoo.co.uk



**Chartered Physiotherapist**  
**Susannah Jennings BSc (Hons)**  
**MCSP, HCPC, MAACP**



Musculo-Skeletal Injuries:

- Back & Neck Pain
- Muscle & Joint Pain
- Rehabilitation after Surgery
- Postural Conditions (including Post & Ante Natal)
- Mobility Difficulties

Treatments Available:

- Joint Mobilisation & Manipulation
- Soft Tissue Massage and Stretching
- Acupuncture
- Mobility Assessments
- Electrotherapy
- 1:1 Clinical Pilates
- Rehabilitation Programs

31 Thistle Green, Swavesey, Cambridge. CB24 4RJ.  
 Tel: 07970 548205

Email: susie@swaveseyphysio.co.uk  
 Web: www.swaveseyphysio.co.uk

# F.W. COOK FUNERAL SERVICE

49 Church Street Willingham

Tel Willingham 260325

Andrew Cook Dip FD Kay Cook Dip FD MBIE

A long established family business providing a personal 24 hour service

Golden Charter pre-payment funeral plans available

## COOK'S MEMORIALS

New memorials and refurbishments

Brochures available on request

**La` Mac**  
Hairdressing for all  
the family



- ◆ Friendly Service
- ◆ Traditional & up to date styling
- ◆ Fully trained in all colouring techniques
- ◆ Open Tuesday - Saturday  
(late 7.00pm Wednesday)

We aim to make your visit as pleasant as possible, with a professional and friendly atmosphere to help you relax.

If you are thinking of a change please pop in - we will be pleased to help.

☎ 01954 231 445  
2a Market Street Swavesey  
Cambridgeshire CB24 4QG

**Struggling with Long Covid?  
Living with chronic pain?  
Can't get a good night's sleep?**





Five Element Acupuncture

- diagnoses the root cause
- calms your nervous system
- relaxes tense muscles
- rebalances your body
- nourishes mind and spirit

Discover how working on your health with a fully qualified Five Element acupuncturist can transform your outlook.

Phone or email today for your FREE 20-minute consultation with Willingham acupuncturist Kaye Rooney  
Lic. Ac., B.A Hons. MBACC  
kaye@kr-acupuncture.com  
07593 058748



Find out more at  
kr-acupuncture.com



**DDB Home Solutions Limited**  
Making your house a home

We are a company based in Needingworth specialising in kitchen and bathroom installations and can also supply the following services;

- Carpentry and Joinery
- Plumbing
- Electrical installation – Part P registered
- Floor and wall tiling
- Less-abled Bathrooms and Wet Rooms



We are a member of the Institute of Carpenters and also the Guild of Master Craftsmen with over twenty years experience


Visit our website for more information - [www.ddbhomesolutions.co.uk](http://www.ddbhomesolutions.co.uk)  
For an informal discussion or quote please contact Darren or Jo Turnbull  
Tel: 01480 495984, or email us at [Darren@ddbhomesolutions.co.uk](mailto:Darren@ddbhomesolutions.co.uk)






**Carpet, Upholstery & Fine Rug  
Cleaning Service  
&  
Wood Floor Restoration**


Call Today  
01223 790796  
or scan QRcode  
to message us:



Please quote:  
Swavesey Meridian Mag

*"We were very satisfied with the technician and the way the carpets were cleaned. He was very polite and phoned to say he was coming and again later to let us know he would be with us shortly. Thank you for your services."*

**Mrs Burling**



Art of Clean, Denny Lodge Business Park, Ely  
Road, CB25 9PH  
[www.artofclean.co.uk](http://www.artofclean.co.uk)

**LIGHT REMOVALS**

Small Houses to Single Items

**ANY DISTANCE  
7 Days a Week**

**For a Free Quote**

**Telephone:**  
**01480 352220**  
**07711 556833**

[www.cambslightremovals.com](http://www.cambslightremovals.com)

Contact us:  
david@rosegatefarm.co.uk  
07922 588171



Rose and Crown Road Road, Swavesey

Butchery Open Fridays (8.30 am - 5.30 pm) & Saturdays (8.30 am - 1.30 pm)

[www.rosegatefarm.co.uk](http://www.rosegatefarm.co.uk)

*Bespoke Butchering – butchered to suit your requirements*

#### BEEF

- Primarily from our own Hereford / Angus herd
- All at least 21-day aged

#### PORK

- Bred & reared here at Rosegate Farm.
- Home-made sausages, dry-cured bacon and gammons (smoked and unsmoked)
- Cooked Ham

#### LAMB

- Swavesey born and bred
- individual cuts, or ¼, ½ or whole lamb packs available

#### CHICKEN (sourced from Diaper Poultry)

- Sutton Hoo Free Range
- St George Chicken

BBQ Meats – Burgers – Kebabs – Glazes

*See you in the butchery!*



# AJ Carpentry



Local, family run business who thrive on transforming project dreams into a stunning reality!

*Extensions – Conversions – New Builds – Groundworks – Bathrooms*

*Kitchens – Flooring – Electrical works – the list is endless!*

[www.ajcarpentry.co.uk](http://www.ajcarpentry.co.uk)

07989 341724 / 07812 671495

# YOUR COMPLETE

GAS, HEATING AND PLUMBING COMPANY

- PLUMBING
- HEATING
- GAS
- BATHROOMS
- WATER SOFTENERS
- PROPERTY MAINTENANCE



01954 204044

[entiregroup.co.uk](http://entiregroup.co.uk)

[service@entiregroup.co.uk](mailto:service@entiregroup.co.uk)

A distributor for Harvey Mini max water softener



**Vaillant**  
Vaillant approved installers

# M.B. FLACK

Interior & Exterior  
Painter & Decorator  
& Repairs

30+ Years Experience  
in the trade.

**Free Estimates**

Telephone

**01954 231 915**

## Accountancy & Taxation Services



Tax Returns  
Business Accounts  
Bookkeeping  
VAT Returns  
Payroll  
Audits

**L.A. Wells** FCCA CTA

Chartered Certified Accountant, Chartered Tax Advisor

4 Scorey  
Fenstanton  
Huntingdon  
Cambridgeshire  
PE28 9QG

Tel: 01480 466 197



[www.lwells.co.uk](http://www.lwells.co.uk)

## Stamp Chiropody & Podiatry

Casey Stamp MCPod BSc (Hons)

HCPC registered CH15068



- General chiropody - nails, hard skin & corns
- Diabetic foot care
- Children's Feet - Growing pains, Verrucas, etc.
- Sporty Feet & associated injuries + pains
- Ingrowing toe nails
- Custom made Orthotics/insoles
- Dancing feet - we'll keep you on your toes
- Biomechanics & Gait analysis

**New Clients Always Welcome**

**Find us at:**

1E Highgate Farm,  
Over Rd, Willingham,  
CB24 5EU

Tel: 07807 505534

[www.stamppodiatry.co.uk](http://www.stamppodiatry.co.uk)

## MAGAZINE ADVERTISING RATES

ADVERTISING RATES AS FROM FEBRUARY 2025

For a one year inclusion i.e. six issues.

Size	Advertiser	Magazine
Full page	£286	£379
Half page	£149	£214
Quarter page	£100	£132

The following rates are for one inclusion only and as a premium rate is already charged will be positioned in the magazine section:-

Half page one inclusion only £100

A small charge may be made for creating and amending artwork

Prices are subject to change

For all advertising details please contact:

Email: [admin@swaveseymeridian.org.uk](mailto:admin@swaveseymeridian.org.uk)



Handpicked Villas with private pools.  
Over 30 years of creating perfect holidays.  
Book with confidence.

• Greece • Spain • Lanzarote • Balearics • Portugal • Turkey • France • Italy • Croatia • Cyprus

01954 261 431

[www.vintagetravel.co.uk](http://www.vintagetravel.co.uk)



Plumbing and heating supplies  
to the trade and public



We are a local independent company supplying  
all your plumbing & heating needs, including:

**Bathroom Taps • Boilers • Bathroom Suites  
Underfloor Heating • Central Heating Radiators  
Heated Towel Rails • Showers • Kitchen Taps  
Sinks • Baths • Sanitaryware  
Plastic Plumbing Systems • Fittings**

*Do not hesitate to ring, email or visit...*

Unit 10, Norman Way Industrial Estate, Over, Cambridge CB24 5QE.  
Tel: 01954 230268. E-mail: [info@dandtsupplies.co.uk](mailto:info@dandtsupplies.co.uk) [www.dandtsupplies.co.uk](http://www.dandtsupplies.co.uk)

## NOTIFICATION OF MAJOR EVENTS

Please use this form to notify us of any major events you are organising so that we can publish the dates in the magazine and on the website at [www.swaveseymeridian.org.uk](http://www.swaveseymeridian.org.uk)

It is hoped this will avoid major events clashing on the same day. Please send to the Editor, [editor@swaveseymeridian.org.uk](mailto:editor@swaveseymeridian.org.uk)

Event \_\_\_\_\_

Location \_\_\_\_\_ Date \_\_\_\_\_ Time \_\_\_\_\_

Contact Name \_\_\_\_\_ Tel No. \_\_\_\_\_

## BIRTHDAYS, ANNIVERSARIES & SPECIAL OCCASIONS

If you would like to mark any occasion that is special to you or somebody that you know by announcing it in this magazine, please fill in the form below.

Also supply your name and contact details, and return to the Editor by the copy date.

We will endeavour to include it in our next issue.

SHORT MESSAGE:

---



---



---

## USEFUL TELEPHONE NUMBERS & WEBSITES

Doctor's Surgery (Swavesey)	01954 230202	<a href="http://swaveseyurgery.nhs.uk/">swaveseyurgery.nhs.uk/</a>
Doctor's Surgery (Over)	01954 231550	<a href="http://oversurgery.nhs.uk/">oversurgery.nhs.uk/</a>
<b>Police:</b>		<a href="http://www.cambs.police.uk">www.cambs.police.uk</a>
Emergency	999	
All Non Emergency Calls	101	
Swavesey Parish Council	01954 202982	<a href="http://www.swavesey-pc.gov.uk">www.swavesey-pc.gov.uk</a>
Swavesey Pre-school Enquires	01954 273312 Ext 2	<a href="http://www.swavesey.cambs.sch.uk/page/?title=EY+%26amp%3B+P&amp;pid=59">www.swavesey.cambs.sch.uk/page/?title=EY+%26amp%3B+P&amp;pid=59</a>
Swavesey Primary School	01954 273312	<a href="http://www.swavesey.cambs.sch.uk/">www.swavesey.cambs.sch.uk/</a>
Swavesey Village College:	01954 230366	<a href="http://www.swaveseyvc.co.uk">www.swaveseyvc.co.uk</a>
Community Office	01954 234488	<a href="http://www.swaveseyvc.co.uk/community-education/">www.swaveseyvc.co.uk/community-education/</a>
Swavesey Post Office	01954 232311	
<b>Cambridgeshire County Council:</b>		<a href="http://www.cambridgeshire.gov.uk">www.cambridgeshire.gov.uk</a>
General Enquiries	0345 045 5200	
Library Service	0345 045 5225	<a href="http://www.cambridgeshire.gov.uk/residents/libraries-leisure-culture/libraries">www.cambridgeshire.gov.uk/residents/libraries-leisure-culture/libraries</a>
South Cambs District Council	01954 713000	<a href="http://www.scambs.gov.uk">www.scambs.gov.uk</a>
<b>Electricity (UK Power Networks):</b>		
Emergency & Power Cut Report Line	0800 783 8838	<a href="http://www.ukpowernetworks.co.uk">www.ukpowernetworks.co.uk</a>
Gas Emergencies (National Grid)	0800 111999	<a href="http://www.nationalgas.com/emergency-contacts">www.nationalgas.com/emergency-contacts</a>
Water (Cambridge Water Company) Leak:	0800 316 7676	<a href="http://www.cambridge-water.co.uk">www.cambridge-water.co.uk</a>
Sewage (Anglia Water) Emergency	03457 145 145	<a href="http://www.anglianwater.co.uk">www.anglianwater.co.uk</a>
Environment Agency (Flood Line):	0800 807060	<a href="http://www.environment-agency.gov.uk">www.environment-agency.gov.uk</a>
Samaritans	116 123	<a href="http://www.samaritans.org">www.samaritans.org</a>
Addenbrooke's Hospital:	01223 245151	<a href="http://www.addenbrookes.org.uk">www.addenbrookes.org.uk</a>
Hinchingbrooke Hospital	01480 416416	<a href="http://www.hinchingbrooke.nhs.uk">www.hinchingbrooke.nhs.uk</a>
NHS Direct	111	<a href="http://111.nhs.uk">111.nhs.uk</a>
<b>Airports + Road &amp; Rail:</b>		
Local Taxi: Alpha Cars	01954 232300	<a href="http://www.alphacarsonline.co.uk">www.alphacarsonline.co.uk</a>
Gatwick	0844 892 0322	<a href="http://www.gatwickairport.com">www.gatwickairport.com</a>
Heathrow	0844 335 1801	<a href="http://www.heathrow.com">www.heathrow.com</a>
Luton	01582 405100	<a href="http://www.london-luton.co.uk">www.london-luton.co.uk</a>
Stansted	0808 169 7031	<a href="http://www.stanstedairport.com">www.stanstedairport.com</a>
Traveline (Bus Coach & Rail)	0871 200 22 33	<a href="http://www.traveline.info">www.traveline.info</a>
<b>Local Timetables:</b>		
Cambridgeshire Bus Information		<a href="http://www.cambridgeshirebus.info">www.cambridgeshirebus.info</a>
Stagecoach	01223 433250 0345 241 8000	<a href="http://www.stagecoachbus.com">www.stagecoachbus.com</a>
National Express Coaches	03717 81 81 81	<a href="http://www.nationalexpress.com">www.nationalexpress.com</a>
Whippet Coaches	01954 230011	<a href="http://www.go-whippet.co.uk">www.go-whippet.co.uk</a>
National Rail	03457 48 49 50	<a href="http://www.nationalrail.co.uk">www.nationalrail.co.uk</a>
<b>Veterinary Practices:</b>		
Village Vet (Longstanton)	01954 780027	<a href="http://www.villagevet.co.uk">www.villagevet.co.uk</a>
Ash Croft (Hardwick)	01954 210250	<a href="http://www.ashcroftvet.co.uk">www.ashcroftvet.co.uk</a>
Vets For Pets (Bar Hill)	01223 243535	<a href="http://www.vets4pets.com/practices/vets-in-cambridge/vets4pets-cambridge-bar-hill/">www.vets4pets.com/practices/vets-in-cambridge/vets4pets-cambridge-bar-hill/</a>

# SAVE THE WHITE HORSE INN

## Our Pub. Our Village. Our Future.

The White Horse has been part of village life since 1668 and is now Swavesey's last remaining pub. It closed on 26th March, and we're exploring options to reopen it, through new tenants, a revised lease, or community ownership.

Losing the village's only pub could reduce house prices by **10-15%**. With average values around **£418,000**, that's a potential drop of **£40,000-£60,000** per household.

There is also the risk that the premises could be converted into a different type of business.

Whether you value it as a community space or want to help protect property values, please scan the QR code to go directly to **[www.savethewhitehorseinn.co.uk](http://www.savethewhitehorseinn.co.uk)** and fill out a short survey to share your views.

